

# Aluminum Terminal Plugs - Offset Pin

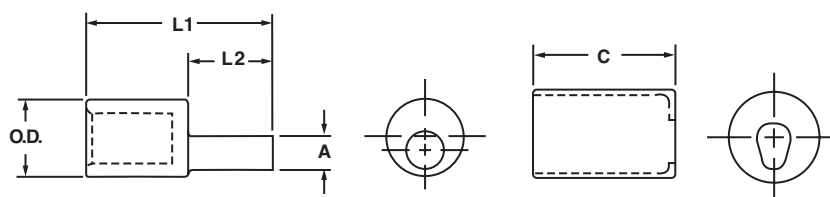
## Type TPO

### For terminating copper or aluminum wire

- Made of high strength aluminum alloy, tin-plated and filled with oxide inhibitor for a cool running compression connection
- Optimum design to permit use of stranded copper or aluminum conductors in equipment such as panel boards, meter sockets and mechanical connectors
- Offset pin allows for connector alignment flexibility
- Solid plug has same diameter as current carrying equivalent copper wire permitting the use of larger aluminum wire to connect equipment
- Connector is marked with catalog number, die index, color code and required number of crimps
- Insulating covers are supplied with each connector and are rated 600 V



486A-486B  
LISTED  
AL9CU



CATALOG NUMBER	CONDUCTOR SIZE	EQUIVALENT PIN SIZE	APPROXIMATE DIMENSIONS (IN.)					CRIMPING TOOL REFERENCE		
			A	O.D.	L1	L2	C	DIE COLOR CODE	PENN-UNION DIE CATALOG NO.	BURNDY DIE INDEX NO.
TPO-2/0	2/0 Str.	#1 AWG	.33	.85	2.70	1.13	2.25	White	T-298	298
TPO-3/0	3/0 Str.	1/0 AWG	.37	.85	2.80	1.25	2.25			
TPO-4/0	4/0 Str.	2/0 AWG	.42	.85	2.80	1.28	2.25			
TPO-250	250 kcmil	3/0 AWG	.47	1.10	3.00	1.28	2.50	Brown	T-299	299
TPO-300	300 kcmil	4/0 AWG	.53	1.10	3.10	1.47	2.50			
TPO-350	350 kcmil	250 kcmil	.57	1.10	3.10	1.47	2.50			
TPO-400	400 kcmil	300 kcmil	.63	1.32	3.40	1.69	2.87	Pink	T-300	300
TPO-500	500 kcmil	350 kcmil	.68	1.32	3.40	1.69	2.87			
TPO-600	600 kcmil	400 kcmil	.73	1.46	4.00	1.73	3.75	Yellow	-	936
TPO-750	750 kcmil	500 kcmil	.81	1.46	4.20	1.73	3.75			